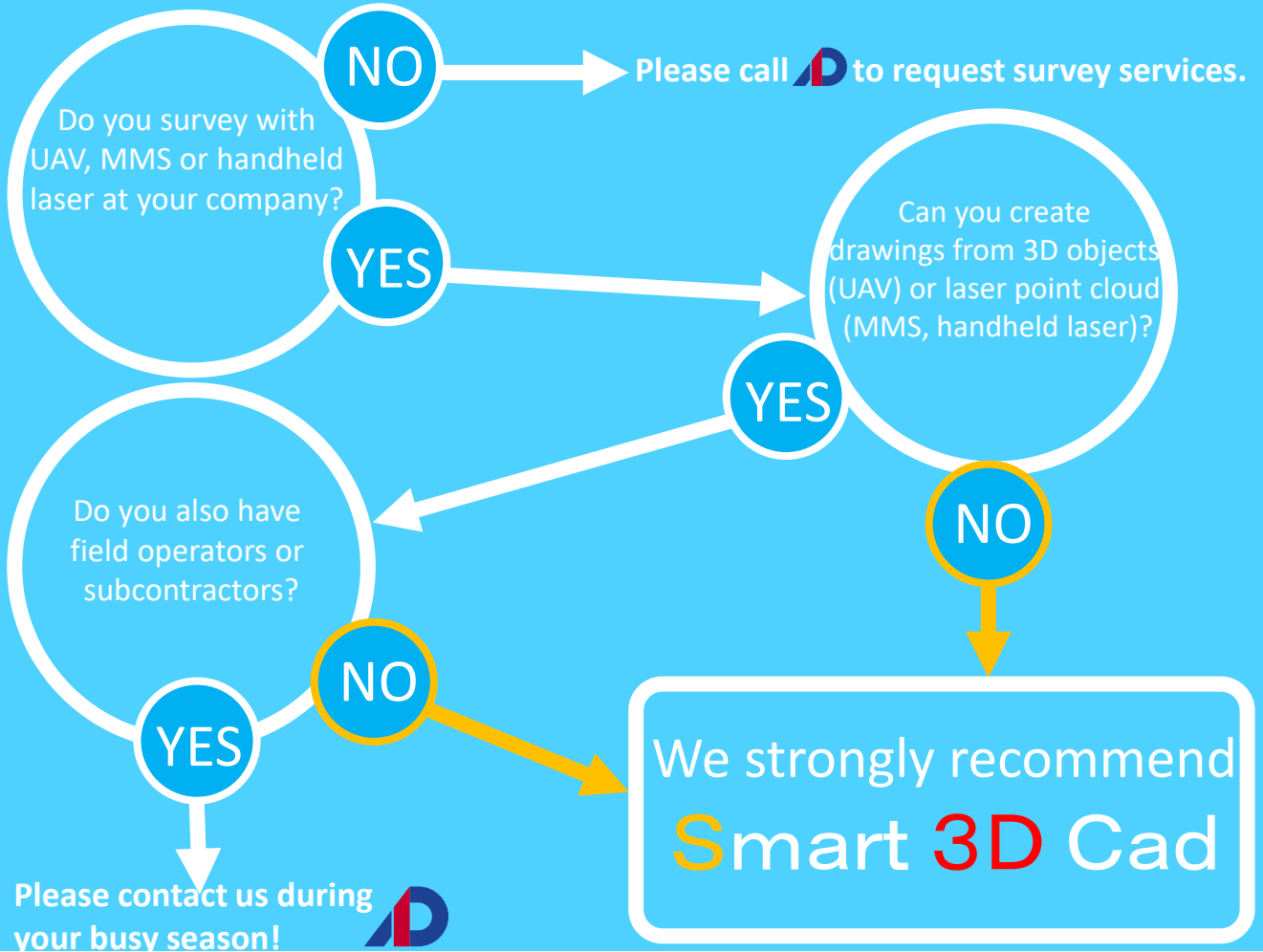
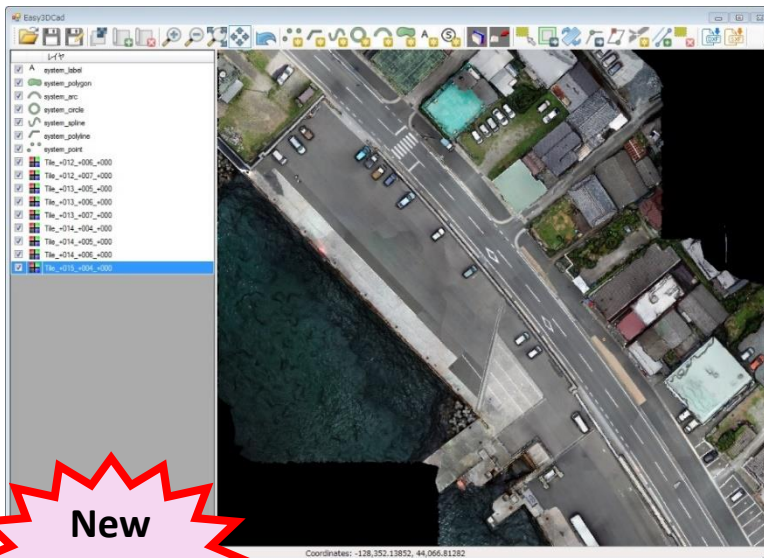


Smart 3D Cad

Smart3DCad makes it easy for anyone to make drawings using 3D models created from UAV captured images and 3D laser point clouds.



Basic function for Smart 3D Cad



New Functions!!

Point cloud noise filtering function, TIN generation function, shaded relief map drawing function, contour output function, cross-section line output function and 3D distance/area measurement function

■ Associated format

- Import
OBJ • LAS • GeoTiff • SIMA
- Export
DXF • SXF

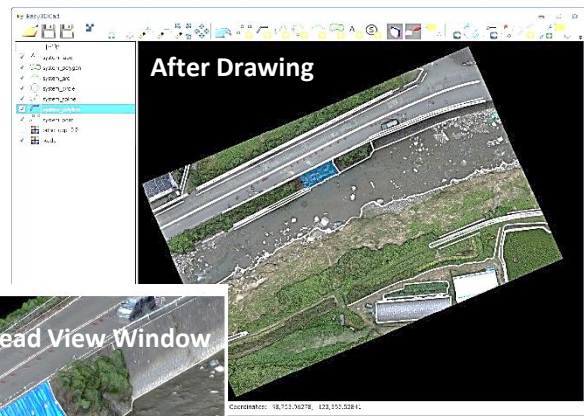
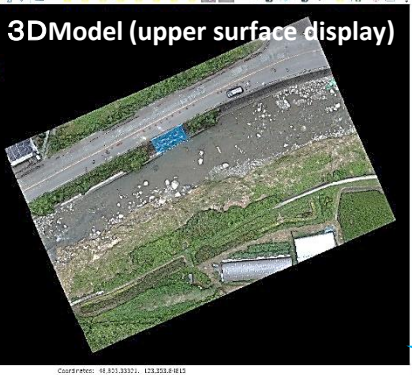
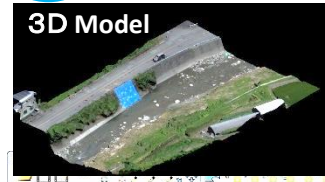
■ Major functions

- Drawing (point, line, curve line, circle, circular arc, surface and letter)
- Registering and placing symbols
- cross sections and 3D overhead view
- Move, Copy, Delete and Rotate
- Vertex editing
- Parallel lines
- Layer (display/non-display)



Enables creation of drawings with Smart 3D Cad

3D model created from the images taken by UAV

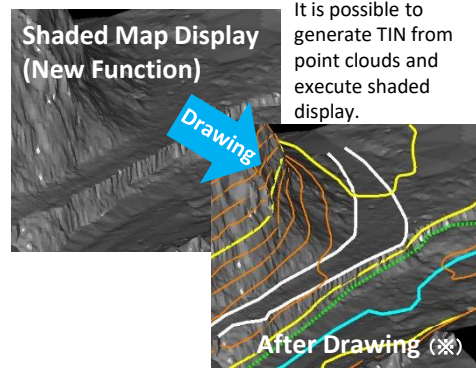
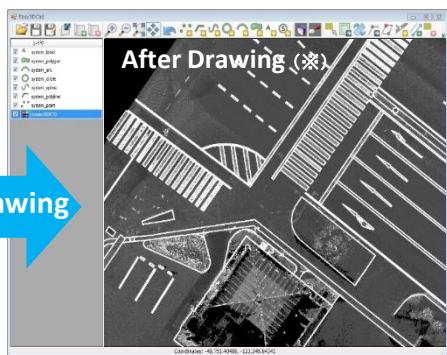
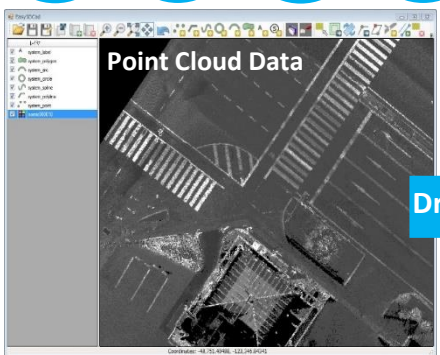


Making a drawing while checking with overhead view. Drawing data has 3D coordinates.

Saving DXF·SXF After saving in DXF/SXF data, you can edit it with your usual CAD.



Enables creation of drawings with point cloud data (LAS) surveyed with a handheld laser, UAV, MMS and fixed laser.



It is possible to generate TIN from point clouds and execute shaded display.

✳ "Drawing" is not automatic, it is by hand-drawing.

- ◆ Enables creation of drawings by field operators in emergencies, such as disasters.
- ◆ Even those unfamiliar with CAD can create drawings with one hour of training.
- ◆ Drawing data is acquired in 3D coordinates.
- ◆ Low priced to allow for purchase at licenses for many users.

Standard Price → **JPY 300,000 (excluding tax)**



Please take notice that effective April 1, 2019, ASCO-DAITO CO., LTD. will be changing its name to NIPPON INSIEK CO., LTD.



<https://www.insiek.co.jp/en/>

■ Osaka Head Office
 Ito Bldg. 3-6-14 Minamihommachi, Chuo-ku,
 Osaka 541-0054 Japan
 TEL +81-6-6282-0325 / FAX +81-6-6282-0326

■ Tokyo Head Office
 Sumitomoseimei Nihonbashitomizawacho Bldg. 9-19
 Nihonbashitomizawacho, Chuo-ku, Tokyo 103-0006 Japan
 TEL +81-3-5641-2181 / FAX +81-3-5641-2187